

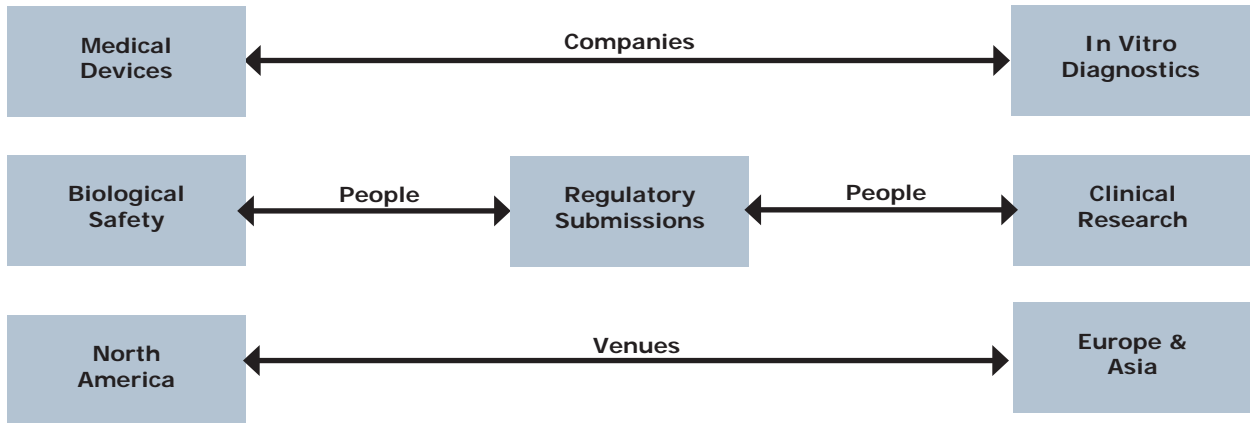


**CLINICALDEVICEGROUP**  
Medical Device Evaluations

*Rethink Your Expectations*

# About Us

## Three Kinds of Customers



We do business with medical device and in vitro diagnostic companies from around the world, focusing our expertise on biological safety, clinical research, and regulatory submissions.

## Four Kinds of Service



Cafeteria-style or turnkey, we are a full service contract research organization. We can do all or part of a clinical trial, consult on regulatory affairs, or prepare expert toxicology reports to address biological safety.

Our [eConferences](#), [Clinical Device Forum](#), on-site seminars, and [soon] on-demand training are cornerstones of our success. And our books and productivity tools for medical device good clinical practices are designed to help you work independently.

*CDG serves the medical device industry, only. That's our love, speciality, and commitment.*



## The Leader



***Nancy J Stark, PhD, President***

Her major accomplishments include:

1990 - Founded CDG Inc.

2001 - Appointed US Co-chair to WG4/TC194, ISO 14155.

2002 - Founded the [Clinical Device Forum](#).

2004 - Named one of 100 Notable People in Medical Devices by MD&DI Magazine.

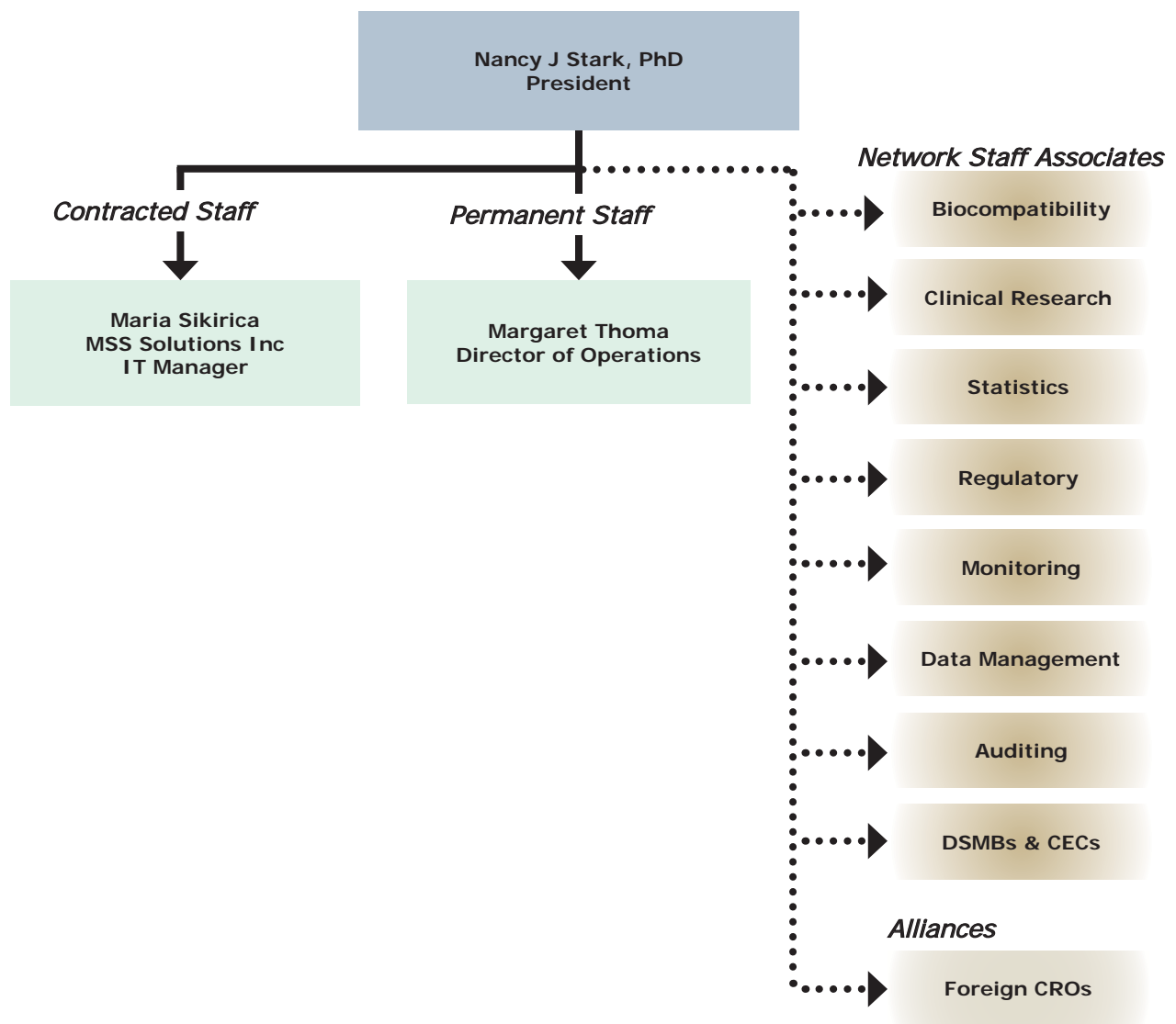
2007 - Invited to Editorial Advisory Board of MD&DI.

You can download her current curriculum vitae at [www.nancyjstark.com](http://www.nancyjstark.com).

*Stark publishes regularly in peer-reviewed journals and is viewed as a world expert on good clinical practices for medical devices.*

# Organization

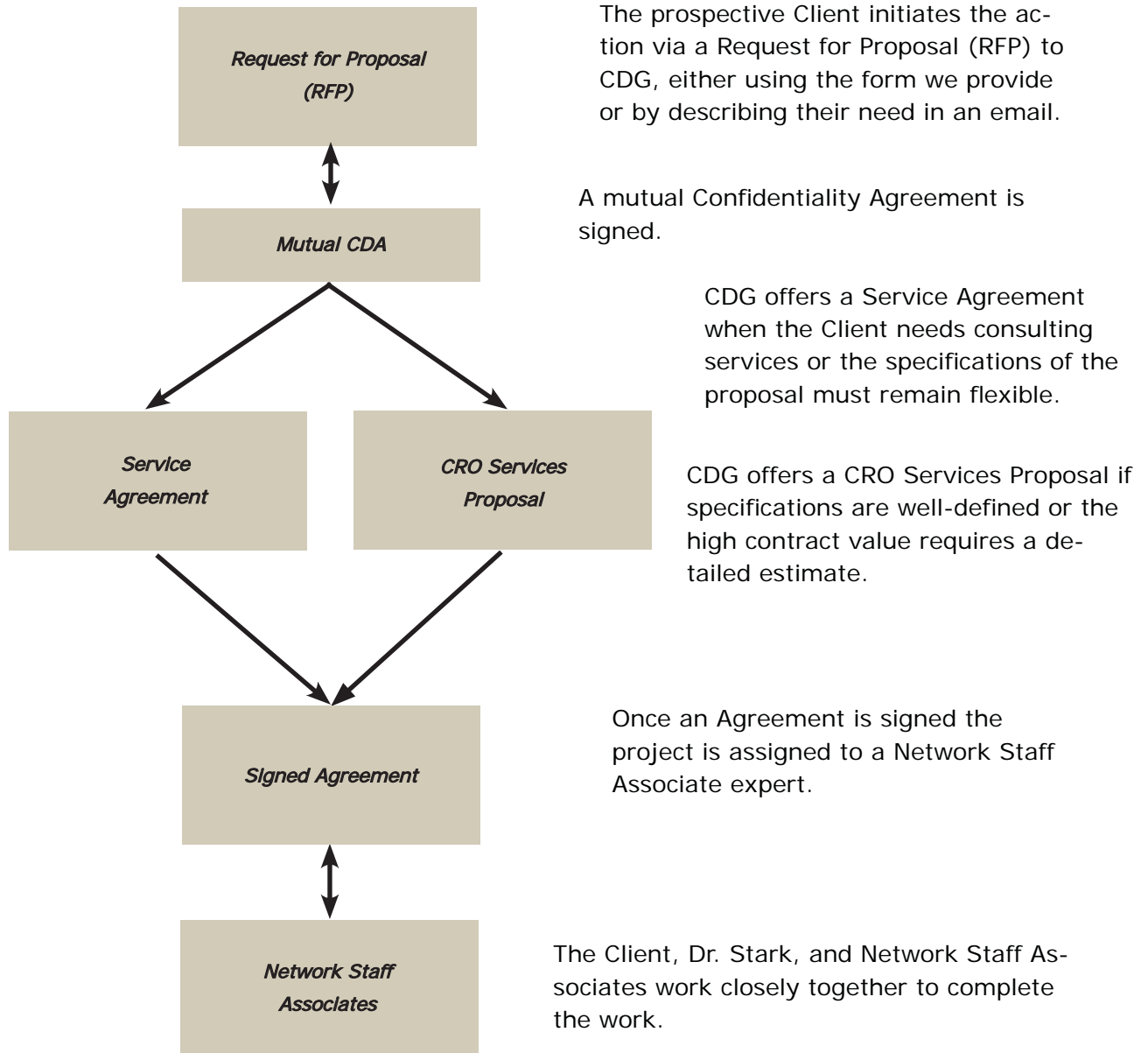
Clinical Device Group was founded in 1990 by our President, Nancy J Stark, PhD. She is supported full time by a Business Manager, Office Assistant/Corporate Artist, and Executive Assistant/Bookkeeping and as needed by an orchestra of Network Staff Associate and CRO Alliance sub-contractors. The Associates are expert independent professionals, the Alliances extend our service to you worldwide. We only work with medical device specialists.



*Our orchestra of Network Staff Associates and CRO Alliances gives you instant access to a broad range of professional experience.*



## Getting Started with CDG



*We work closely with Clients to assure your managerial control of projects. All Agreements are fee-for-service, so you pay only for what you use.*



# Our Capabilities

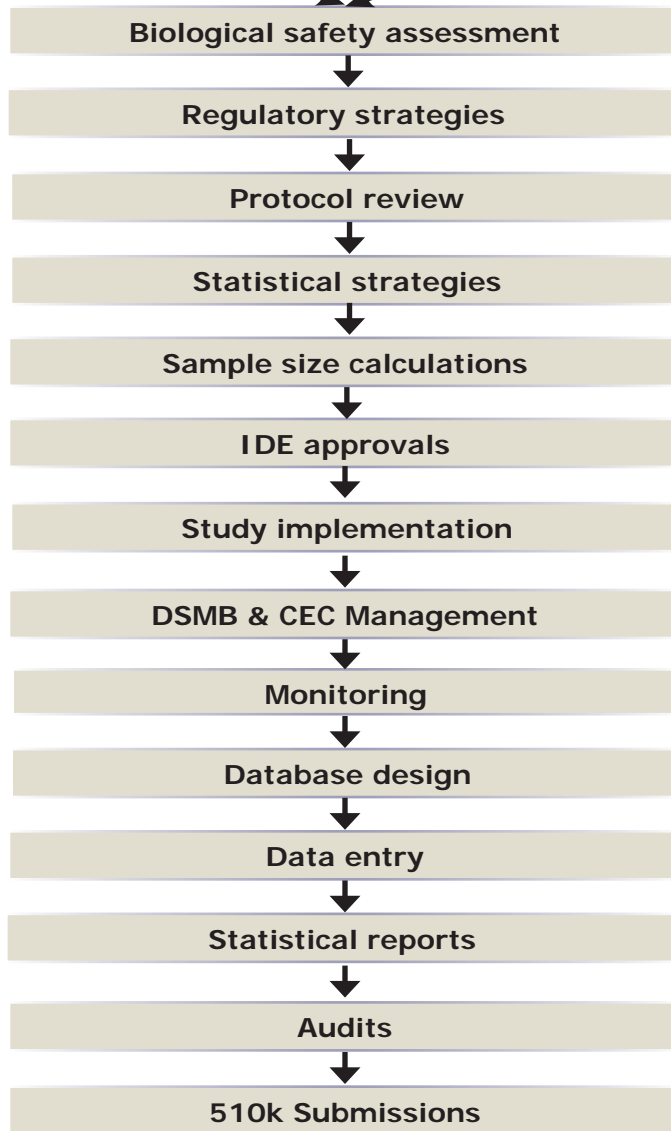


US Companies



EU Companies

Product Development Process



*Cafeteria style, or turnkey,*

*we can help you with biological safety,*

*clinical research,*

*or regulatory submissions.*

*Our commitment is to medical devices.*

**Market Entry!**



## Throughout the Year



### *Since 1990*

We are as solid as the 1890 Victorian flat we live in. Visit us anytime. The first day of capabilities assessment, project presentation, consulting, and lunch, is on us.



*Clinical Device Group Inc  
2128 W Evergreen Ave  
Suite One  
Chicago, IL 606022  
P: 1-773-489-5706  
[cdginc@clinicaldevice.com](mailto:cdginc@clinicaldevice.com)  
[www.clinicaldevice.com](http://www.clinicaldevice.com)  
Map*